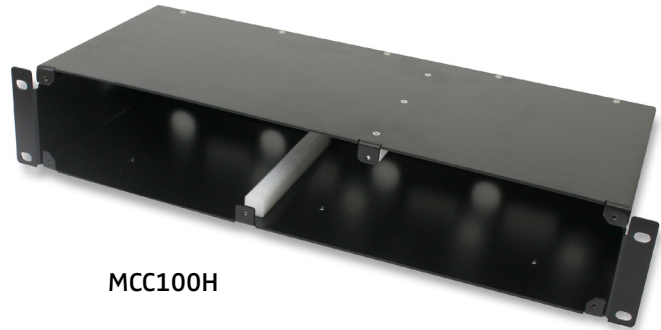


- ◆ Slots for up to 2 MCC Hybrid Cards
- ◆ Overall Subrack height of 2RU
- ◆ Subrack depth of 7.4 inches
- ◆ Compatible with MCC100-4x4 Hybrid Cards
- ◆ Front Access to Antenna ports for ease of installation
- ◆ Compact Aesthetic design
- ◆ Blank faceplate available for unused slots



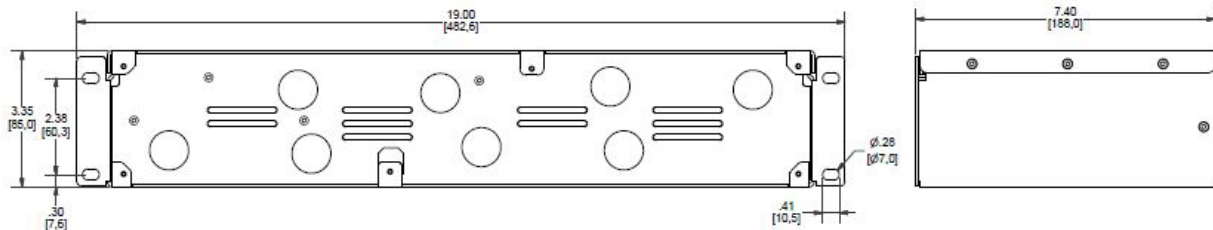
MCC100H

The MCC100H Subrack is compact 2RU rackmount chassis. It has 2 slots for Microlab's MCC100-4x4 series Hybrid cards. The subrack has been designed for easy installation of the hybrid cards. It has pass through holes for ports of modular hybrids at the back for interconnection with the filter outputs. The antenna ports are in the front. For unused slots in the subrack, MCC100-A02 blank faceplates can be used.

Model Numbers	Wt. nom.
Indoor	lb (kg)
MCC100H	3.3 (1.5)

Slots:	2
Form Factor:	2RU
Depth:	7.4 in [188 mm]
Height:	3.35 in [85 mm]
Hole:	0.28 in [7 mm]
Material:	Aluminum

### Outline Diagram



Dimensions in inches [mm]

Note: Specifications are subject to change without prior notification.

10OCT2018