

- ◆ Resistive Attenuators for All Wireless Applications up to 6GHz
- ◆ 2 and 5W Power Rating
- ◆ 4.3-10 and N-Type Connector
- ◆ RoHS Compliant
- ◆ Highly Reliable



2W (4.3-10 & N-type)

5W (4.3-10 & N-type)

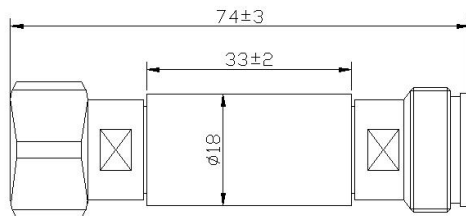
This AX series attenuators are coaxial attenuators for wireless applications in the wide DC to 6 GHz frequency range having low VSWR.

The attenuator is constructed of resistive element in a conventional series circuit. Units are exceptionally rugged, and effects of normal ambient temperature and humidity are negligible.

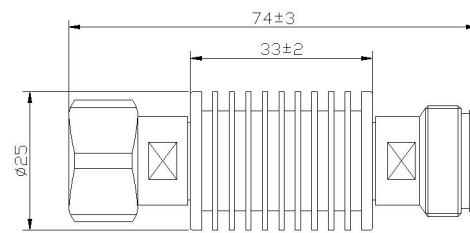
Frequency Range:	DC to 6.0 GHz
Power Rating:	See Table
Peak Power:	500 W
Impedance:	50Ω nominal
VSWR max.:	<1.25:1
Temperature Range:	-40°C to +55°C, Indoor
Finish/Material:	RoHS Compliant
Connector:	4.3-10 & N-Type (m-f), Tri-plate
Weight:	See Table

Input Power (Watt) ¹	Part Number (xx refers to attenuation value)		Values (dB)	Accuracy (dB)	Weight g (oz)	
	4.3-10(m-f)	N-type(m-f)				
2	AX-602-xxE	AX-602-xxN	01, 02, 03, 06, 10, 15, 20, 30	± 0.6 (1-6dB) ± 0.8 (10dB) ± 1.0 (15 & 20dB) ± 1.2 (30dB)	81 (2.86)	4.3-10
					70 (2.47)	N-type
5	AX-605-xxE	AX-605-xxN	01, 02, 03, 06, 10, 15, 20, 30	± 0.6 (1-6dB) ± 0.8 (10dB) ± 1.0 (15 & 20dB) ± 1.2 (30dB)	90 (3.17)	4.3-10
					78 (2.75)	N-type

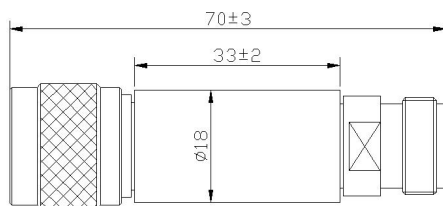
¹Full-rated performance from -40°C to +55°C.



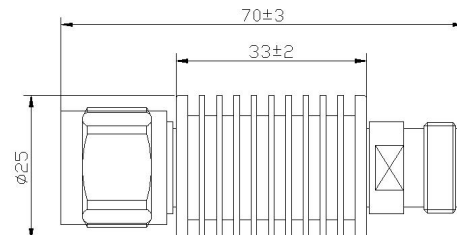
AX-602-xxE Outline



AX-605-xxE Outline



AX-602-xxN Outline



AX-605-xxN Outline

Note: Specifications are subject to change without prior notification.

04AUG2025