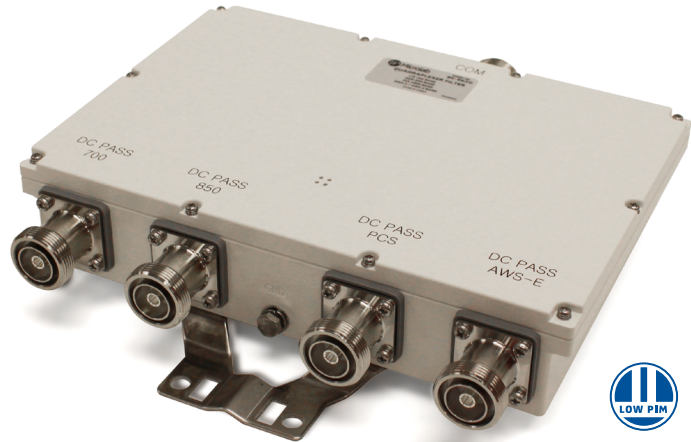


- ◆ Combines LTE-700, GSM-850, PCS and AWS-1 & AWS-3 services
- ◆ 7/16 DIN connectors
- ◆ 50 dB Input Isolation
- ◆ Up to 250 W CW/Input Avg.
- ◆ Minimal RF Insertion Loss
- ◆ Rugged, High Reliability
- ◆ RoHS compliant Design



Model Number	Connectors	Weight. nom.
BK-962D	7-16 (f)	8.6 lbs (3.9 kg)

The BK-962D Quadraplexer has been designed using passive, proprietary techniques to ensure minimal loss and very high reliability. It allows efficient combining or division of the standard cellular bands for use in a base station, coaxial distributed in-building cellular network or DAS.

Frequency Bands:

Input 1:	LTE-700 Bands:	698 - 787 MHz
Input 2:	GSM-850 band:	817 - 896 MHz
Input 3:	PCS 1900 Band:	1850 - 2000MHz
Input 4:	AWS Band (Rx/Tx):	1695 - 1780 and 2110 - 2180 MHz

Return Loss:	>18 dB, all ports
Interband Isolation:	>50 dB
Insertion Loss:	<0.5 dB all paths
Power Rating:	250W CW max./input avg.
Impedance:	50Ω nominal
Intermod. (PIM):	-161 dBc(-118 dBm) (2 tones of 20W, at downlink band)

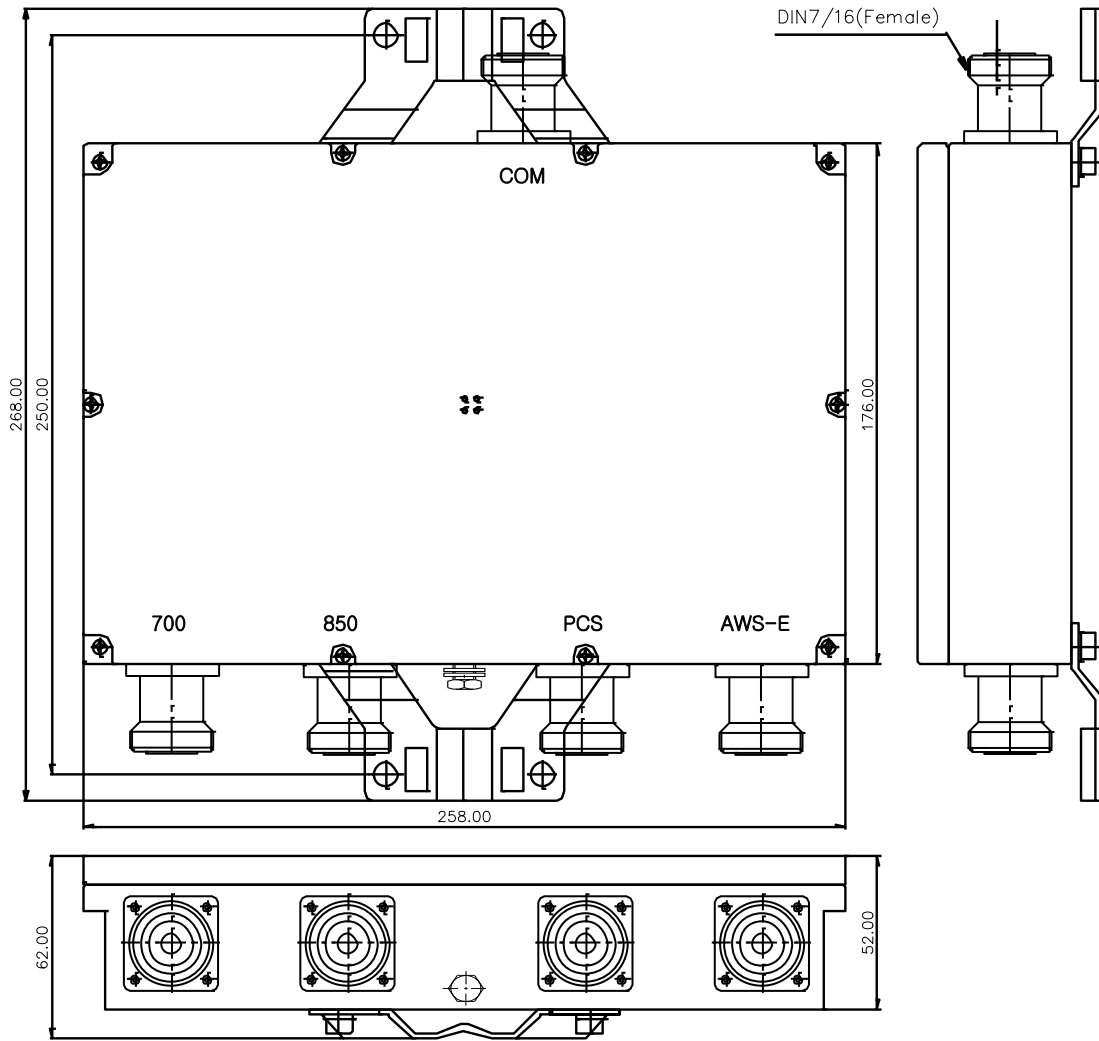
DC/AISG:

Connection:	DC Pass on all ports
Max. Current:	2A continuous; 4A peak
Max Voltage:	±33V
OOK Insertion Loss:	<0.8 dB at 2170 MHz
OOK Return Loss:	>12 dB
Environment:	-33° - +65°C, IP67
EMC:	ETS 300 342-3
Lightening Protection:	±5 kA, 8/20μs
Altitude:	2000 m max. (~6500 ft.)
Housing:	Bone White
Connectors:	Long Neck, Triplate
Ground Lug:	M6 Screw
Mounting:	Bracket included, see outline

Note: Specifications are subject to change without prior notification.

6MAY2020

BK-962D Outline



Dimensions in mm