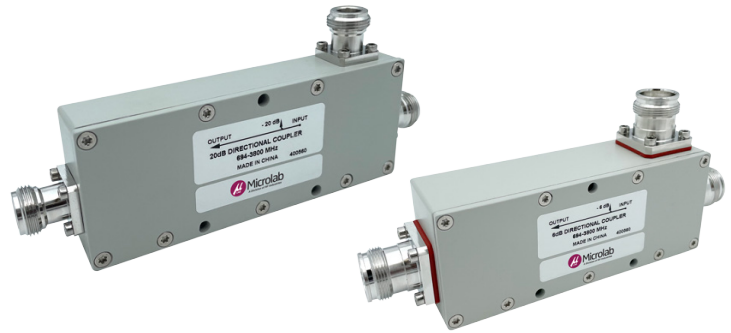


- ◆ Enterprise+ Series: Commercial Wireless and Private LTE Applications
- ◆ Extended Bandwidth: 694-3800MHz
- ◆ Guaranteed Low PIM
- ◆ 300 Watt Average Power
- ◆ IP65 Rated
- ◆ RoHS Compliant



Microlab's Enterprise+ Series addresses the commercial wireless and private LTE needs for Enterprise DAS Applications. The CC-EP-xx-738 series of directional coupler is a tapered stripline design that couples off a defined fraction of signal with high directivity and minimal loss. Availability in a wide range of coupling values makes this series useful in optimizing the signal distribution required in Passive and Active DAS Applications. The extended frequency range of this design with stable performance across the band enables optimal coverage and performance for multi-band applications.

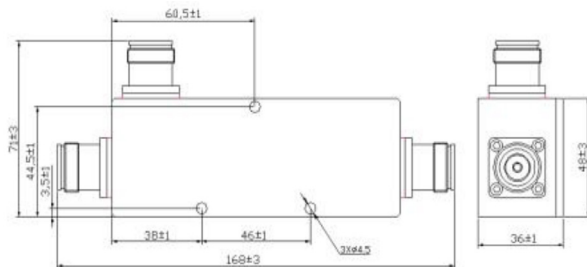
4.3-10 Part#	N-type Part#	Coupling Value (dB)	Main Loss (dB)	Accuracy (dB)
CC-EP-5-738FE	CC-EP-5-738FN	5 dB	< 2.1 dB	±0.8
CC-EP-6-738FE	CC-EP-6-738FN	6 dB	< 1.8 dB	±0.8
CC-EP-7-738FE	CC-EP-7-738FN	7 dB	< 1.45 dB	±0.8
CC-EP-8-738FE	CC-EP-8-738FN	8 dB	< 1.3 dB	±0.8
CC-EP-10-738FE	CC-EP-10-738FN	10 dB	< 0.8 dB	±1.0
CC-EP-13-738FE	CC-EP-13-738FN	13 dB	< 0.8 dB	±1.0
CC-EP-15-738FE	CC-EP-15-738FN	15 dB	< 0.5 dB	±1.0
CC-EP-20-738FE	CC-EP-20-738FN	20 dB	< 0.4 dB	±1.2
CC-EP-30-738FE	CC-EP-30-738FN	30 dB	< 0.4 dB	±1.3

Frequency: 694 to 3,800 MHz
 VSWR: 1.3:1 max., all ports
 PIM: < -155 dBc (-112 dBm) min. (Test with 2x+43 dBm tones)

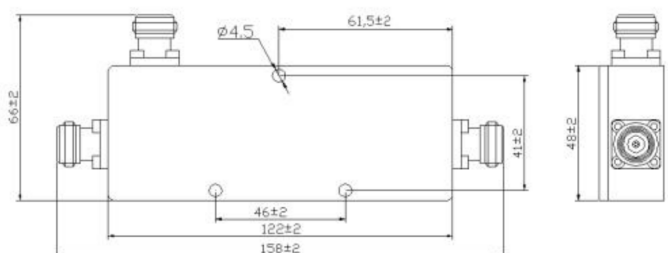
Power: 300 W avg.
 Directivity: 20 dB min.
 Impedance: 50Ω nom.
 Temperature: -35°C to +65°C
 Environment: IP65
 Housing Finish: Painted
 Dimensions: 168 x 71 x 36mm (4.3-10)
 122 x 48 x 23mm (N-Type)
 Weight: 1.2 lbs [0.55kg] (4.3-10)
 0.74lbs [0.34kg] (N-type)

Outline Drawing

CC-EP-xx-738FE



CC-EP-xx-738FN



Dimensions in mm

Note: Specifications are subject to change without prior notification.

04AUG2023