

- ◆ Enterprise+ Series: Commercial Wireless and Private LTE Applications
- ◆ Extended Bandwidth: 694-3800MHz
- ◆ Split ratios from 100:1 to 2:1
- ◆ Patented Design*
- ◆ Minimal RF Insertion Loss
- ◆ IP65 Rated
- ◆ RoHS compliant



*covered by US Patent #7,026,888

Microlab's Enterprise+ Series addresses the commercial wireless and private LTE needs for Enterprise DAS Applications.

Microlab DN-EP-x-738FN tappers unevenly split high-power RF signals in fixed ratios from 100:1 to 2:1 with minimal reflections or loss. The Patented design ensures an excellent input VSWR and coupling flatness across the specified bands.

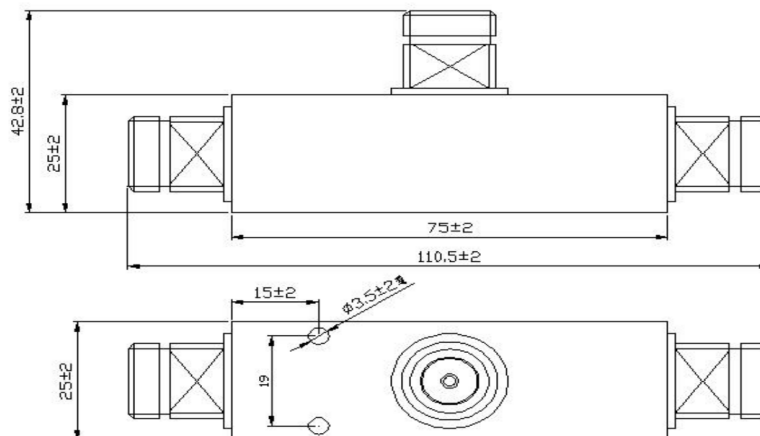
The extended frequency range of this design with stable performance across the band enables optimal coverage and performance for multi-band applications.

Frequency Bands:	694-2200 / 2300-3800 MHz
Power Rating:	300 W avg.
Dissipative Loss:	<0.1 dB (main line)
Return Loss:	< 1.3:1
Impedance:	50 Ω nominal
PIM	< -155 dBc (-112 dBm)(2x43dBm)
Temperature Environment:	-35°C to +65°C
Connectors:	N(f)
Housing Finish:	Painted
Dimensions:	2.95 x 0.98 x 0.98(in);75x25x25(mm)
Weight, nom:	0.38lbs [0.17kg]

Part No	Ratio	Value (dB)	Main Loss (dB)	Branch Loss (dB)	Accuracy (dB)
DN-EP-3-738FN	2:1	3	2.2	4.8	±1.5
DN-EP-4.8-738FN	3:1	4.8	1.7	6.1	±1.5
DN-EP-6-738FN	4:1	6	1.3	7	±1.3
DN-EP-8-738FN	6:1	8	0.9	8.6	±1.3
DN-EP-10-738FN	10:1	10	0.6	10.4	±1.3
DN-EP-13-738FN	20:1	13	0.4	13.2	±1.3
DN-EP-15-738FN	30:1	15	0.3	15.1	±1.3
DN-EP-20-738FN	100:1	20	0.3	20.1	±1.3

Outline Drawing

Dimensions in mm



Note: Specifications are subject to change without prior notification.

07SEP2023