

Preliminary Specifications

- ◆ Split ratios from 100:1 to 2:1
- ◆ Covers all Public Safety bands: VHF, UHF, TETRA, & PS 700/800/900
- ◆ 50 W Avg Power Rating
- ◆ Minimal RF Insertion Loss
- ◆ IP67 Rated
- ◆ RoHS compliant



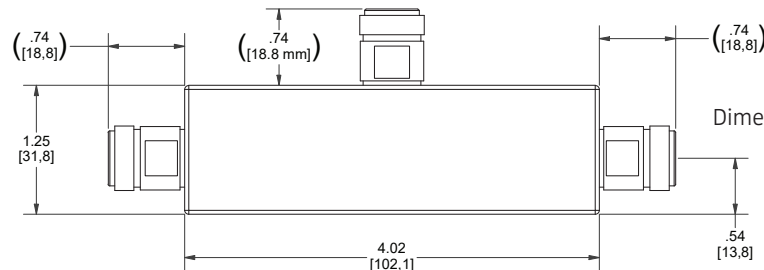
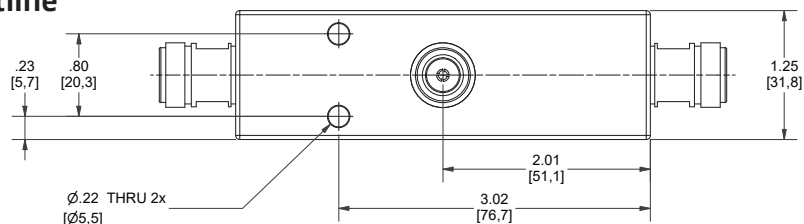
Microlab DN-x1PSN tappers unevenly split high-power RF signals in fixed ratios from 100:1 to 2:1 with minimal reflections or loss. The Tappers cover VHF, UHF, TETRA, and 700 - 900 MHz Public Safety bands. The innovative asymmetric design with DC pass for outputs ensures an excellent input VSWR and coupling flatness across the specified bands.

The lightweight design allows easy attachment to a wall using the supplied bracket. Microlab DN-x1PSN Tappers are ideal for signal distribution networks where a DC pass is required for critical communication network monitoring.

Frequency Bands: 137-960 MHz
Dissipative Loss: <0.1 dB (main line)
Power Rating: 50 W avg., 1 kW peak
Impedance: 50 Ω nominal
DC Pass: All paths
Environment: IP67, -35°C to +75°C
Connectors: N(f), Triplate
Housing Finish: Passivated Aluminum
Weight, nom: 14 oz (380 g)
Mounting: Bracket supplied

Part Number	Ratio, Output Δ , dB	Output Split dB	Coupling to Branch arm, dB					Input VSWR, max.	
			Main/Branch	137-200	200-250	250-380	380-520	698-960	147-380
DN-31PSN	2:1/3	-1.8/-4.8	-6.3 \pm 0.7	-5.8 \pm 0.6	-5.4 \pm 0.6	-5.1 \pm 0.6	-4.8 \pm 0.5	1.40:1	1.30:1
DN-51PSN	4:1/6	-1.0/-7.0	-8.1 \pm 0.7	-7.6 \pm 0.6	-7.3 \pm 0.6	-7.0 \pm 0.6	-6.5 \pm 0.5	1.30:1	1.25:1
DN-71PSN	10:1/10	-0.4/-10.4	-11.0 \pm 0.8	-10.7 \pm 0.7	-10.3 \pm 0.7	-10.1 \pm 0.7	-9.9 \pm 0.5	1.20:1	
DN-91PSN	30:1/15	-0.1/-15.1	-16.0 \pm 0.8	-15.6 \pm 0.8	-15.5 \pm 0.8	-15.2 \pm 0.8	-15.4 \pm 0.5		
DN-01PSN	100:1/20	-0.1/-20.1	-20.3 \pm 1.0	-20.1 \pm 1.0	-20.0 \pm 1.0	-20.1 \pm 0.8	-20.1 \pm 0.8		

Mechanical Outline



Dimensions in inches [mm]

Note: Specifications are subject to change without prior notification.

18FEB2021