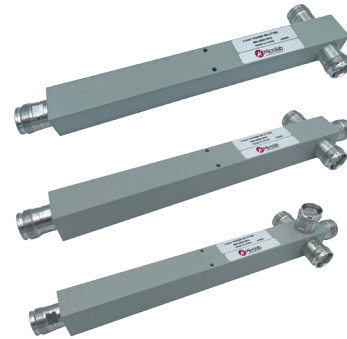


- ◆ Enterprise+ Series: Commercial Wireless and Private LTE Applications
- ◆ Extended Bandwidth: 694-3800MHz
- ◆ Guaranteed Low PIM
- ◆ 300 Watt Average Power
- ◆ IP65 Rated
- ◆ Available in 4.3-10 & Type-N
- ◆ RoHS Compliant



Microlab's Enterprise+ Series addresses the commercial wireless and private LTE needs for Enterprise DAS Applications.

Microlab Model Dx-EP-738 series of 2, 3 and 4 way Power Splitters have been designed to evenly split commercial wireless and private LTE signals with minimal reflections or loss. The mechanical shape allows easy attachment to wall using the supplied bracket.

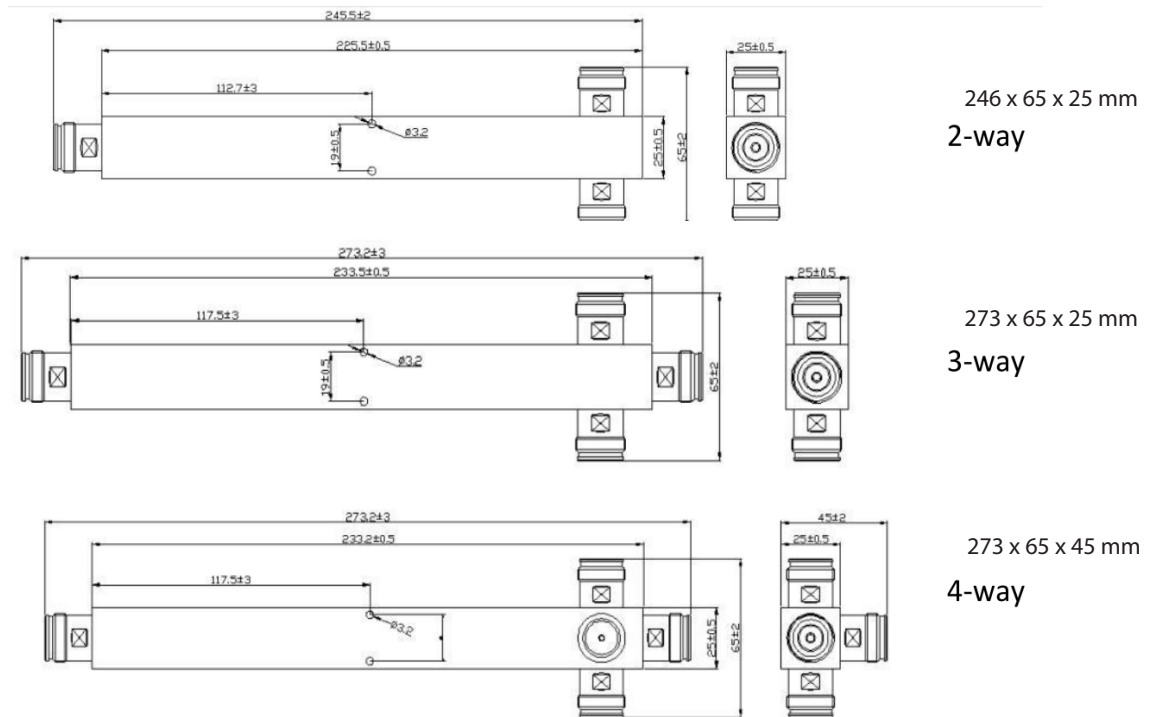
The extended frequency range of this design with stable performance across the band enables optimal coverage and performance for multi-band applications.

Frequency Range:	694-3800MHz
Impedance:	50Ω nominal
Power:	300W avg
PIM:	< -155 dBc (-112 dBm) (2 tones at +43 dBm)
Temperature:	-35°C to +65°C,
Environment:	IP65
RoHS:	Compliant
Housing:	Painted
Dimensions:	See Outline Drawing

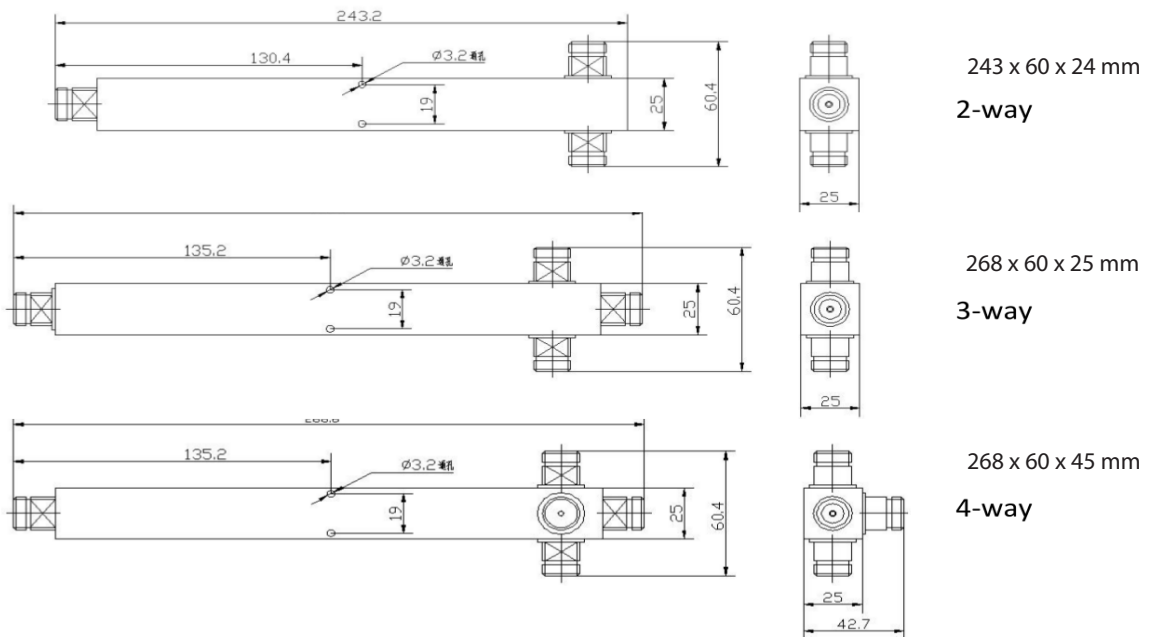
Model Number		No. of Ways	Split Loss	Insertion Loss (dB)	Input VSWR	Weight, nom	
4.3-10(f)	N-type(f)					lbs.	kg
D2-EP-738FE	D2-EP-738FN	2	3	< 0.4	< 1.25:1	0.85	0.39
D3-EP-738FE	D3-EP-738FN	3	4.8	< 0.6	< 1.25:1	1.0	0.45
D4-EP-738FE	D4-EP-738FN	4	6	< 0.6	< 1.3:1	1.05	0.48

Note: Specifications are subject to change without prior notification.

Dx-EP-738FE Outline Drawing



Dx-EP-738FN Outline Drawing



Dimensions in mm

Note: Specifications are subject to change without prior notification.