

The MCC200-403 filter module is available with the new combining 600-700/PCS/AWS/BRS configuration. The filter module is IP67 rated.

Port 1 combines 600-700 support for dual-band radios. The MCC200 is a 6RU rack-mount enclosure that accommodates up to (8) filter combiner modules. In cases where there are only two operators, a single MCC200 sub-rack can house all filter combiners for an entire 4x4 MIMO application. In the multi-operator scenario, refer to additional MCC filter cards for site-specific licensed band combining. For unlicensed and shared bands, MCC200-100 through card can be utilized for injection. All Radio inputs are accessible from the front. Rear interfaces are for interconnection with the wideband hybrid combiner.

For those slots which are unoccupied, a blanking panel MCC200-A03 can be utilized.

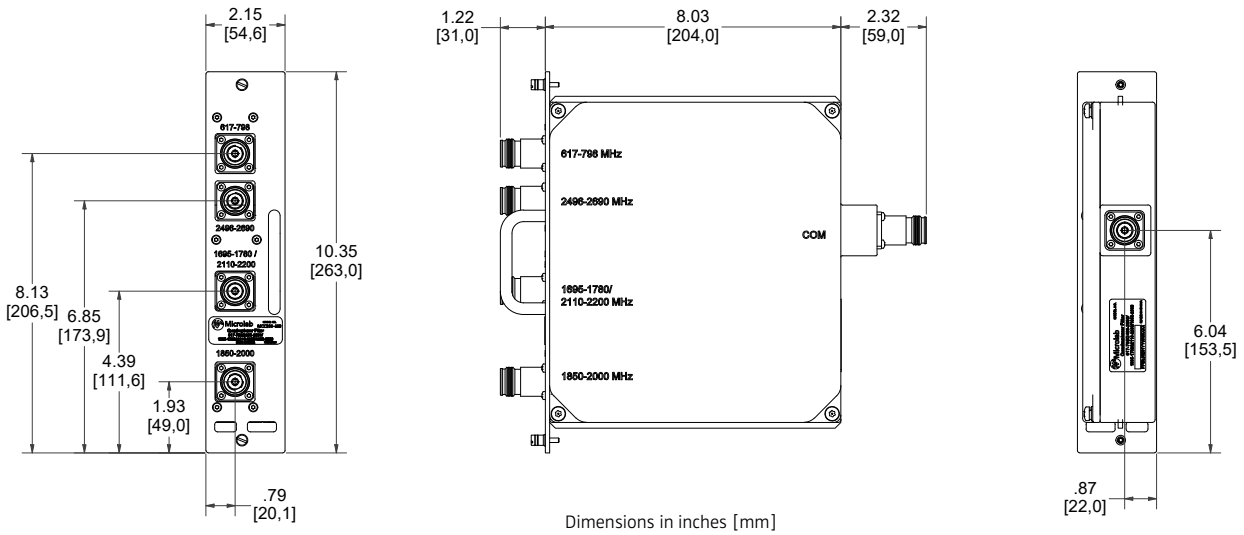


Specification	MCC200-403
Card Type	Quadraplexer
Frequency (MHz)	<b>600-700:</b> 617-798 <b>PCS:</b> 1850-2000 <b>AWS:</b> 1695-1780 & 2110-2200 <b>BRS:</b> 2496-2690
Insertion Loss	<0.4 dB
Isolation	>40 dB
Return Loss	>19 dB
Impedance	50Ω
PIM	<-160 dbc (-117 dBm) (Test with 2x +43dBm tones @ Ambient)
Group Delay	<b>600-700:</b> 3ns <b>PCS &amp; AWS:</b> 22ns <b>BRS:</b> 10ns
Power/Input	40 W avg
Weight, lb (kg)	8.0 (3.65)
Connector	4.3-10 (f), long-neck
Environment	-25°C to +65°C
Ingress Protection	IP67
Dimensions	10.35 x 8.03 x 2.15 in [263 x 204.5 x 54.6 mm]

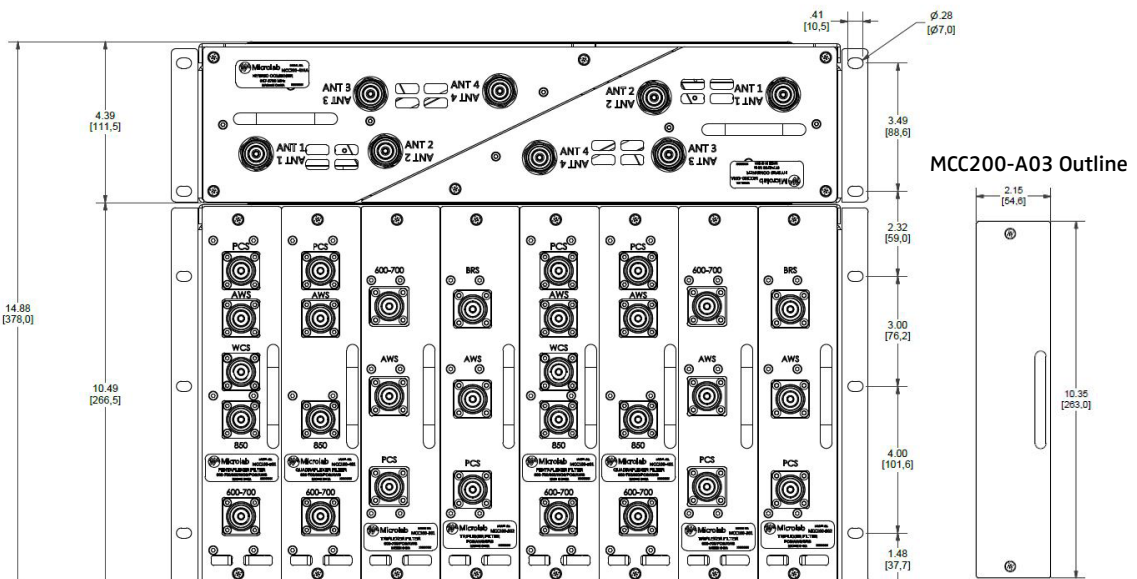
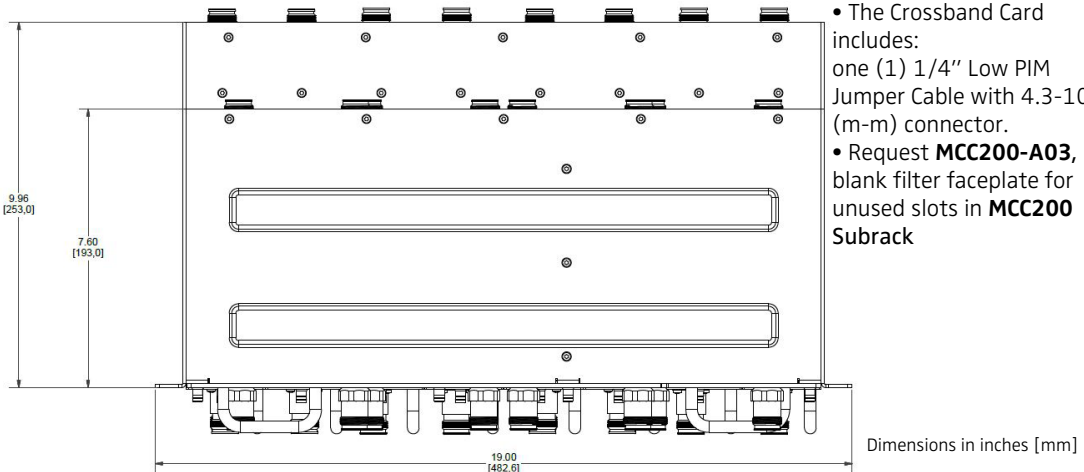
Note: Specifications are subject to change without prior notification.

16MAR2021

MCC200-403 Outline



Outline Drawing for Rackmount



Note: Specifications are subject to change without prior notification.