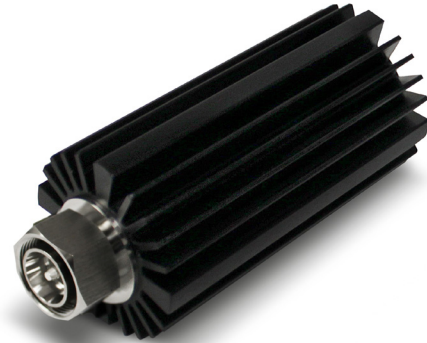


- ◆ Standard bandwidth for commercial applications
- ◆ 25W average power
- ◆ Guaranteed Low PIM
- ◆ Low VSWR
- ◆ Convenient Size
- ◆ Intimate cable contact
- ◆ RoHS compliant
- ◆ Suitable for outdoor environments



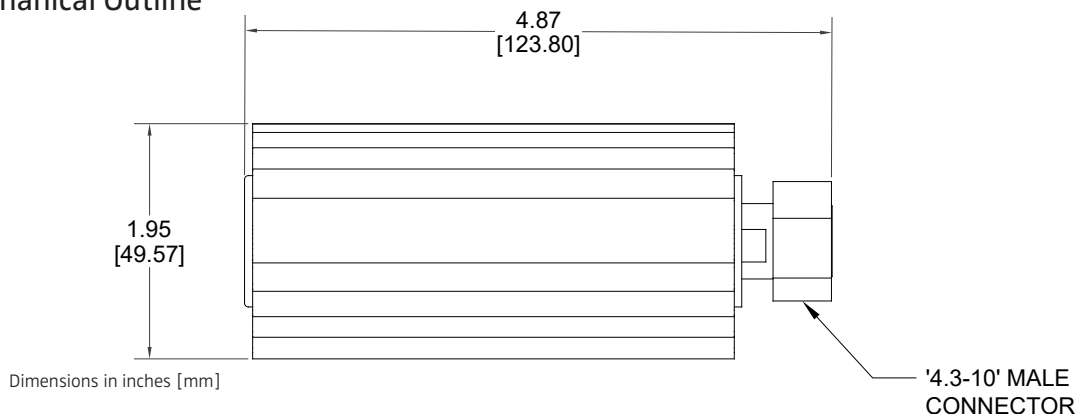
Microlab TK-225 Series Cable Loads are ideal for Small Cell wireless applications, when extremely low PIM, Passive Intermodulation, is required. A typical application is small cell radio combining solution. This cable load termination can be used with Microlab's 2x2, 3x3, and 4x4 hybrid combiners to provide superior low PIM performance.

Units are black anodized for outdoor applications.

Model No.	Connector	Power Rating	Frequency:	350 - 2700 MHz
TK-225ME	4.3-10(m)	25W	VSWR:	0.35-0.4GHz: <1.30:1 max., 1.20:1 typ.
TK-225FE	4.3-10(f)	25W		0.4-2.7GHz: <1.20:1 min., 1.10:1 typ.
TK-225MG	2.2-5(m)	25W	PIM:	-161 dBc (-120 dBm)(Test with 2x 1.9GHz tones @ product's max. power
TK-225MD	7-16(m)	25W	Peak Power:	5 kW peak
TK-225MN	N(m)	25W	Environment:	-35 to +55°C ambient, IP67
			Surface Temp:	+65°C max. per IEC 60950 [†]
			Impedance:	50Ω nom.
			Housing Finish:	Black anodized aluminum
			Connector:	Triplate finish
			Weight, nom:	0.80 lb., 363 g

*Derate Average Power by -1.5%/°C above 55°C ambient.
[†]Complies with IEC60950 90°C Heat Sink Touch temperature with adequate air circulation.

Mechanical Outline



Note: Specifications are subject to change without prior notification.

30NOV2022