

MCC SERIES™ MODULAR D-RAN POI CATALOG



microlabtech.com

Passive Modular D-RAN POI – MCC Series™

The MCC Series is a Passive Modular Carrier Combiner that serves as a point-of-interface (POI) for neutral host Distributed - Radio Access Network (D-RAN) architectures and in-building or outdoor Distributed Antenna Systems (DAS). This solution helps service providers combine RAN remote heads or head-end services for RF distribution. Requirements commonly include the need to combine all commercial signals for all or some of the operators with cellular services extending from 4G/5G 617 MHz to LTE-LAA 6 GHz. The combiner covers the current Licensed C-Band, 3.45 GHz, & CBRS as well as future support for n77 applications. Its modularity enables cost-effective scalability to only pay for what is needed, when its needed.

**The trusted solution for mobile network operators
and neutral host network providers.**



MCC200-SRC-01



MCC200 with CM-141E-2R

Features & Benefits

- 5 bands per filter combiner for superior flexibility
- Frequency coverage from 617 to 5925 MHz for future-proof investment
- Low insertion loss for maximum transmit effective isotropic radiated power (EIRP)
- Low passive intermodulation (PIM) for maximum network throughput
- Guaranteed system specifications for ultimate reliability
- Modularity enables cost-effective scalability as requirements change
- Configurability supports one- or two-sector SISO/MIMO applications
- Various mounting options with passive cooling for easy installation

Modular Filters

MCC200-503

- Integrates:
 - 600-700: 617-798
 - 850: 817-894
 - PCS: 1850-2000
 - AWS: 1695-1780 & 2110-2200
 - 5GNR n77: 3300-4200
 - 40dB Input Isolation
 - 40 W/input



MCC200-502

- Integrates:
 - 600-850: 617-894
 - PCS: 1850-2000
 - AWS: 1695-1780 & 2110-2200
 - WCS-BRS: 2300-2700
 - 5GNR n77: 3300-4200
 - 40dB Input Isolation
 - 40 W/input



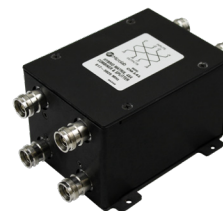
MCC200-100

- Ultra-Wideband 617-5925 MHz
- “Through” Card for injecting bands like CBRS, C-Band & unlicensed bands in the network
- 4.3-10 Connectors



CM-141E

- Ultra-Wideband 617-5925 MHz
- 100W up to 2.6 GHz[†], 3kW peak
- 4.3-10 Connectors



CM-141E-2R

- Ultra-Wideband 617-5925 MHz
- 2RU Rack Mount
- High Isolation & Low VSWR
- 100 W/input
- Dual Channel Configuration



CM-141E-4R

- Ultra-Wideband 617-5925 MHz
- 2RU Rack Mount
- High Isolation & Low VSWR
- 100 W/input
- Quad Channel Configuration



Sub-Rack

MCC200-SRC-01

- Compact Wall-Mount Sub-rack with (1) integrated Ultra-Wideband 4x4 617-5925 MHz
- Combines up to 4 MCC filter cards
- 10" depth from the wall



MCC200-SRC-02

- Compact Wall-Mount Sub-rack with (2) integrated Ultra-Wideband 4x4 617-5925 MHz
- Combines up to 4 MCC filter cards
- 10" depth from the wall



MCC200

- Compatible with MCC200-x01 modular filters
- Slots for up to 8 MCC Filter Cards in 6RU
- Front Access to Filter inputs for ease of installations



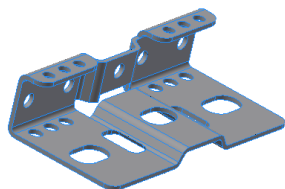
MCC200-SRC-00

- Modular Wall Mount 4-Slot Sub-Rack Only



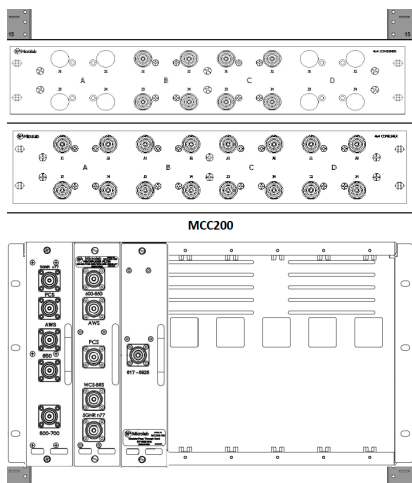
MCC200-500-BKT

- Modular Filter Mounting Kit



Mounting Options

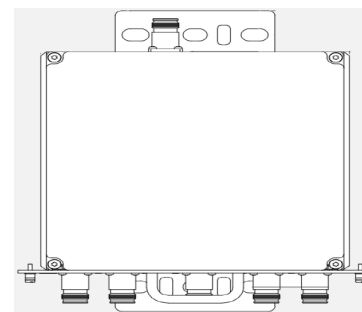
19" Rack mount Sub-rack



Wall mount Sub-rack



Discrete Filter card wall mount bracket



Product Portfolio

Modular Filter Cards	Description
MCC200-503	Pentaplexer 600-700/850/PCS/AWS/5G NR n77, 4.3-10 IP67
MCC200-502	Pentaplexer 600-850/PCS/AWS/WCS-BRS/5G NR n77, 4.3-10 IP67

Modular Hybrid Combiners	Description
CM-141E	Hybrid Combiner 4x4 617-5925MHz 100W -161dBc 4.3-10 IP67
CM-141E-2R	Dual Hybrid Combiner Tray 4X4 617-5925MHz 100W -161dBc 4.3-10
CM-141E-4R	Quad Hybrid Combiner Tray 4X4 617-5925MHz 100W -161dBc 4.3-10

Rack and Peripherals	Description
MCC200-SRC-00	Modular Wall Mount 4-Slot Sub-Rack Only
MCC200-SRC-01	Modular Wall Mount 4-Slots Sub-Rack with 1x Integrated Hybrid Combiner
MCC200-SRC-02	Modular Wall Mount 4-Slots Sub-Rack with 2x Integrated Hybrid Combiner
MCC200	Modular Filter Card Sub-Rack 8-slots 6RU
MCC200-100	“Through” Card for Single Radio Input, 4.3-10 – Optional
MCC200-A03	Modular Faceplate for MCC200 Filter Card Slot
MCC200-500-BKT	Modular Filter Mounting Kit

MCC Series Versus Discrete Components

	Discrete Components	MCC Series
Modular Design and Platform	No	Yes
Passives Performance	Guaranteed by part – Not System	100% Guaranteed as a system
Form-factor / Footprint	Variable	Fixed
Ease of Deployment	No	Yes
Capability to Upgrade after deployment	No	Yes
Labor & Installation Cost	High	Low

Learn more at: microlabtech.com

For more information about Microlab, contact your local representative.
Find a complete list here: microlabtech.com/sales/



Microlab, A Division of RF Industries

300 Interpace Parkway
Parsippany NJ 07054
Phone: +1 (862) 328-1101
sales@microlabtech.com