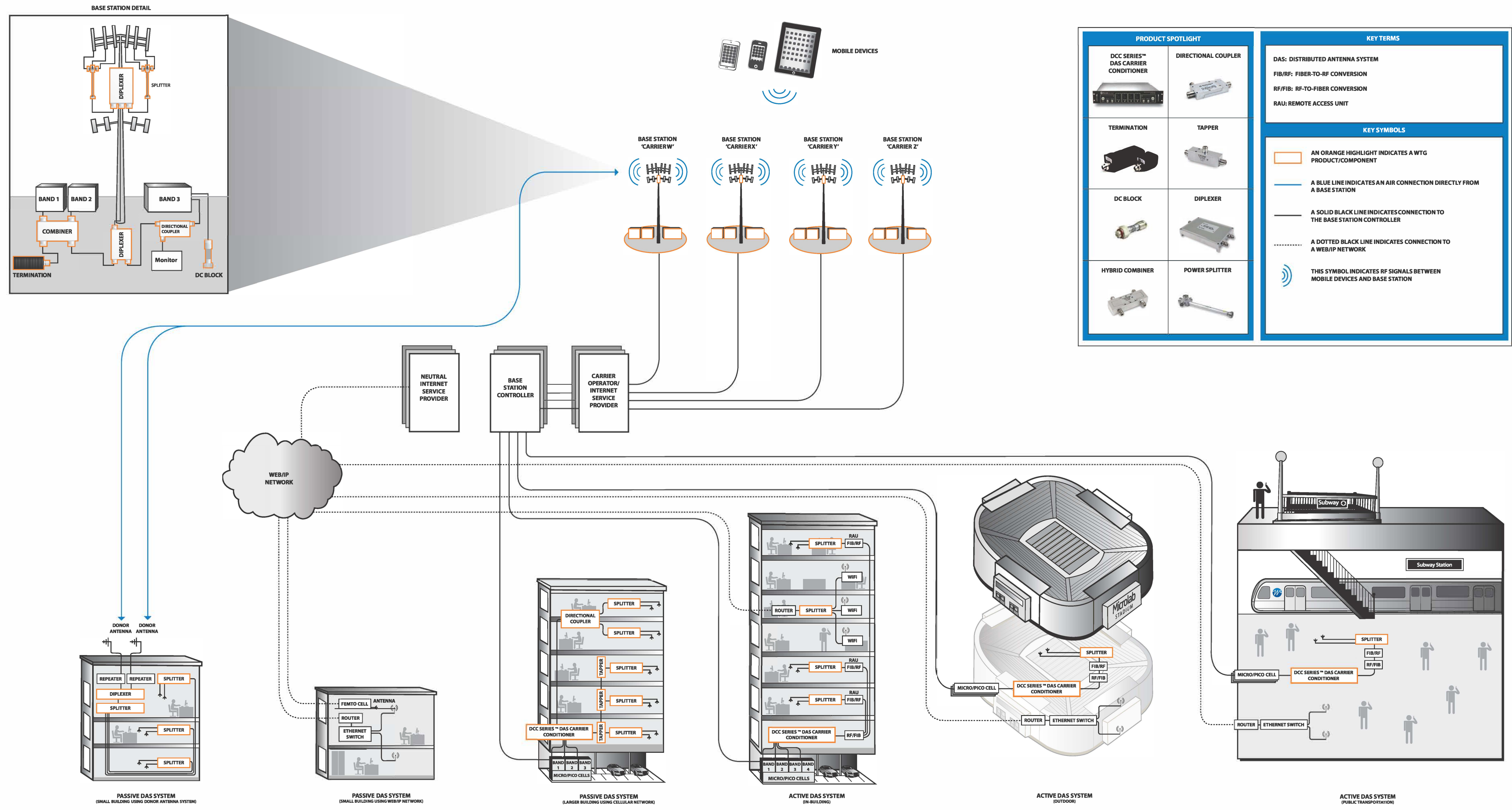


# NETWORK INFRASTRUCTURE & DAS APPLICATIONS DIAGRAM



PRODUCT SPOTLIGHT		KEY TERMS	
<b>DCC SERIES™ DAS CARRIER CONDITIONER</b> 	<b>DIRECTIONAL COUPLER</b> 	<b>DAS:</b> DISTRIBUTED ANTENNA SYSTEM	
<b>TERMINATION</b> 	<b>TAPPER</b> 	<b>FIB/RF:</b> FIBER-TO-RF CONVERSION	
<b>DC BLOCK</b> 	<b>DIPLEXER</b> 	<b>RF/FIB:</b> RF-TO-FIBER CONVERSION	
<b>HYBRID COMBINER</b> 	<b>POWER SPLITTER</b> 	<b>RAU:</b> REMOTE ACCESS UNIT	
<b>KEY SYMBOLS</b>			
<ul style="list-style-type: none"> <li><span style="border: 1px solid orange; display: inline-block; width: 15px; height: 10px; margin-right: 5px;"></span> AN ORANGE HIGHLIGHT INDICATES A WTG PRODUCT/COMPONENT</li> <li><span style="color: blue; font-weight: bold;">—</span> A BLUE LINE INDICATES AN AIR CONNECTION DIRECTLY FROM A BASE STATION</li> <li><span style="border-bottom: 1px solid black; display: inline-block; width: 20px; margin-right: 5px;"></span> A SOLID BLACK LINE INDICATES CONNECTION TO THE BASE STATION CONTROLLER</li> <li><span style="border-bottom: 1px dotted black; display: inline-block; width: 20px; margin-right: 5px;"></span> A DOTTED BLACK LINE INDICATES CONNECTION TO A WEB/IP NETWORK</li> <li> THIS SYMBOL INDICATES RF SIGNALS BETWEEN MOBILE DEVICES AND BASE STATION</li> </ul>			